

Questions?

Specific Pilot Issues

- Differences between Behavioral Health and Primary Care will be taken into account:
- Behavioral Health EHR's and documentation requirements
 - Network/Bandwidth Constraints in Rural Areas
 - HIPAA and FCC Legal
 - Liability Coverage and Insurance
 - DHCS Billing and Credentialing
 - Others as Identified

Pilot Structure

- Guidance published by both CHS and CA Healthcare Association
- Current Phase I Telehealth Planning for Program Services needed
- https://www.cdph.ca/hq

Scope of Pilot

- Limited to a focus on gathering info for a more substantial grant in Phase I
- Work with counties to identify appropriate candidates, creation of a project charter and commitment of resources
- Timeline over the next 4 months

Project Focus

- Discovery of options
 - no full telehealth program implementation
- Provide actionable and well vetted information based on actual test scenarios that can be used for additional grant funding and other financial resources
- Funding to be used for developing Telehealth programs, procuring vendors and equipment

Project Design

- Project team will conduct an analysis of existing telehealth systems and resources currently being used by organizations and counties
- Team will focus a study with the CA Telehealth Network (CTN)
- Start Date Objective
 - Evaluate the feasibility of contracting firm to check home based telehealth operations for other telehealth services currently offered in the region

Project Drivers - AB 415

- The Health Workforce Act of 2011 (AB 415) allows the State to purchase telehealth services from private providers and organizations
- AB 415 allows counties to purchase telehealth services from private providers and organizations
- AB 415 allows counties to purchase telehealth services from private providers and organizations

Project Overview

- 12 trial counties being identified
- 12 trial counties being identified
- 12 trial counties being identified

AB415

- The goal of the act is to:
- Allow for any type of telehealth to be licensed regardless of what it is used for
- The overall purpose is to expand access to telehealth services in rural areas
- and to make the implementation of telehealth services more viable for the providers

More Deliverables

- Develop Business Plan/Sustainability Model
- Bring options to the table
- How Technology Based on CTN resources
- State Personnel
- Test Case and Technology Plans
- Evaluate Outcomes

Phase I Deliverables

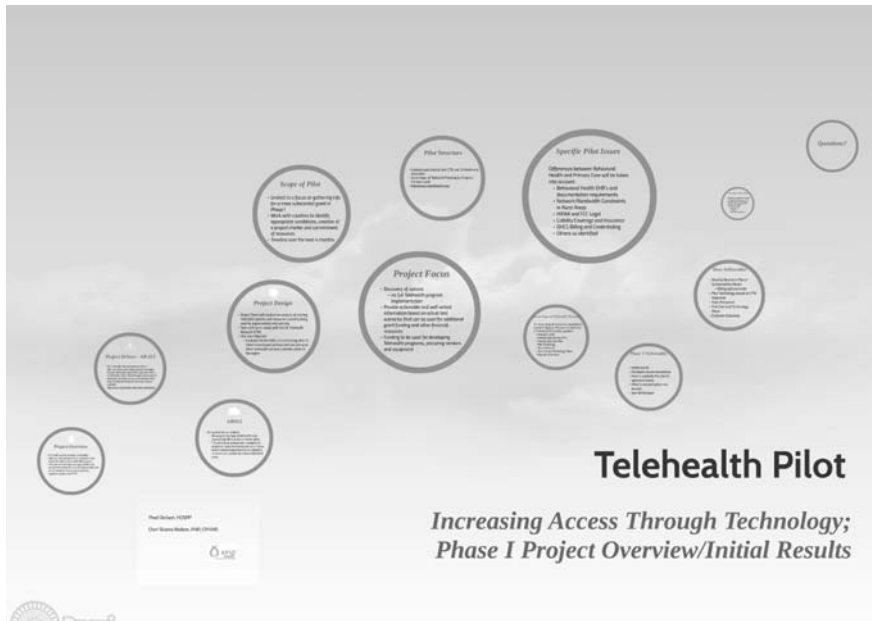
- Initial Results
- Feasibility Recommendations
- How to evaluate the results demonstrated
- What is needed before any further action
- Key Messages

Telehealth Pilot

Increasing Access Through Technology; Phase I Project Overview/Initial Results

Thad Dickson, HCISFP
Chen Silvestro Molero, PMP, CPHIMS





Thad Dickson, HCISPP

Cheri Silveira Moliere, PMP, CPHIMS



Project Overview

- CA Small Counties interest in Telehealth
- Xpio just received approval to conduct a multi-phase Tele-Behavioral Health Pilot program
- This pilot will evaluate how organizations can expand their telehealth services offered, staff and service locations that are permissible by regulators, payers and DHCS





Project Drivers - AB 415

- The Telehealth Advancement Act of 2011 (AB415), authored by Assemblyman Dan Logue (R-Lake Wildwood) updated the legal definitions of telehealth, streamlined the approval process for telehealth-delivered services and broadened the types of allowed telehealth-delivered services available
- <http://cchpca.org/health-information-technology>



AB415

- Removed limits on locations
 - Allowing for any type of telehealth to be covered regardless of where it takes place
 - This can include patient care management programs, home monitoring devices, in-home patient medical appointments and physician reviews in any location for store and forward cases



Project Design

- Project Team will conduct an analysis of existing Telehealth options and resources currently being used by organizations and counties
- Team will work closely with the CA Telehealth Network (CTN)
- One Core Objective
 - Evaluate the feasibility of conducting clinic to client home based services and comparing to other telehealth services currently active in the region



Scope of Pilot

- Limited to a focus on gathering info for a more substantial grant in Phase I
- Work with counties to identify appropriate candidates, creation of a project charter and commitment of resources
- Timeline over the next 4 months



Project Focus

- Discovery of options
 - no full Telehealth program implementation
- Provide actionable and well vetted information based on actual test scenarios that can be used for additional grant funding and other financial resources
- Funding to be used for developing Telehealth programs, procuring vendors and equipment



Pilot Structure

- Guidance published by both CTN and US Health and associates
- Seven Steps of Telehealth Planning for Program Success model
- <http://www.caltelehealth.org/>



Specific Pilot Issues

Differences between Behavioral Health and Primary Care will be taken into account:

- Behavioral Health EHR's and documentation requirements
- Network/Bandwidth Constraints in Rural Areas
- HIPAA and FCC Legal
- Liability Coverage and Insurance
- DHCS Billing and Credentialing
- Others as identified



Seven Steps of Telehealth Planning

The Seven Steps framework is adopted from Samuel G. Burgiss, Ph.D and included in the CTN telehealth kit used for guidance.

- Evaluate Needs
- Develop Care Services Plan
- Develop Business Plan
- Plan Technology
- Train Personnel
- Test Care and Technology Plans
- Evaluate Outcomes



Phase 1 Deliverables

- Initial results
- Hardware recommendations
- How to evaluate the client's appropriateness
- What is needed before any session
- Xpio Whitepaper



More Deliverables

- Develop Business Plans/
Sustainability Model
 - Billing options/rates
- Plan Technology based on CTN
resources
- Train Personnel
- Test Care and Technology
Plans
- Evaluate Outcomes



Even More Deliverables

- Identify funders/grants interested
in Telebehavioral projects in CA
- Identify partners to strengthen
regional value proposition to
prospective funders
 - Primary Care
 - Hospital
 - Other BH collaborators



Questions?



